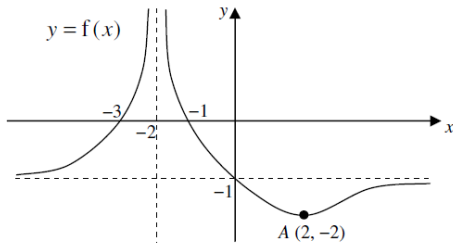
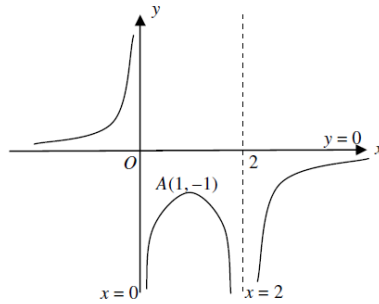


1. For each of the following graphs, sketch the corresponding graph of  $y = f'(x)$ , indicating clearly any asymptotes, axial intercepts and turning points, where possible.

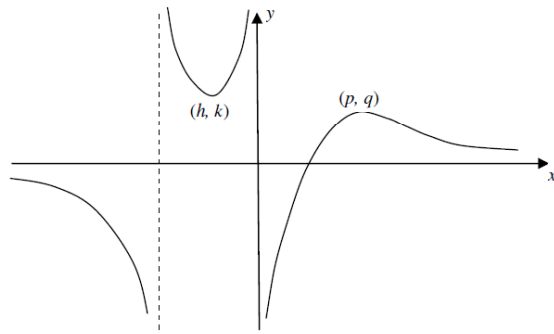
(a)



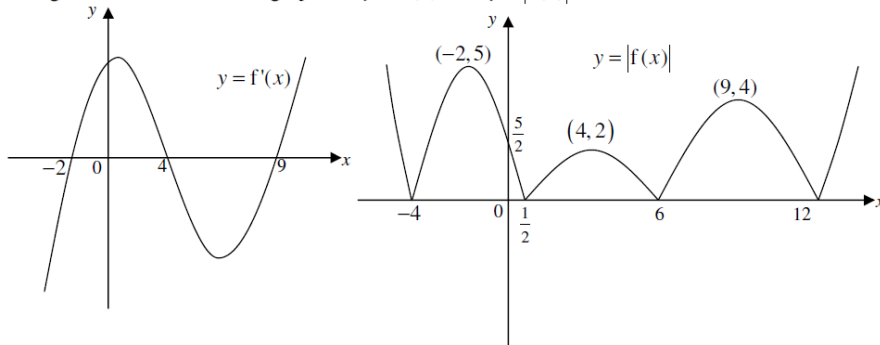
(b)



(c)



2. The given sketches show the graphs of  $y = f'(x)$  and  $y = |f(x)|$ .



Sketch the graph of  $y = f(x)$ , showing clearly the stationary points and intercepts.

3. The diagram below shows the graph of  $y = f(x)$ . Sketch the graph of  $y = f'(x)$  on a separate diagram.

